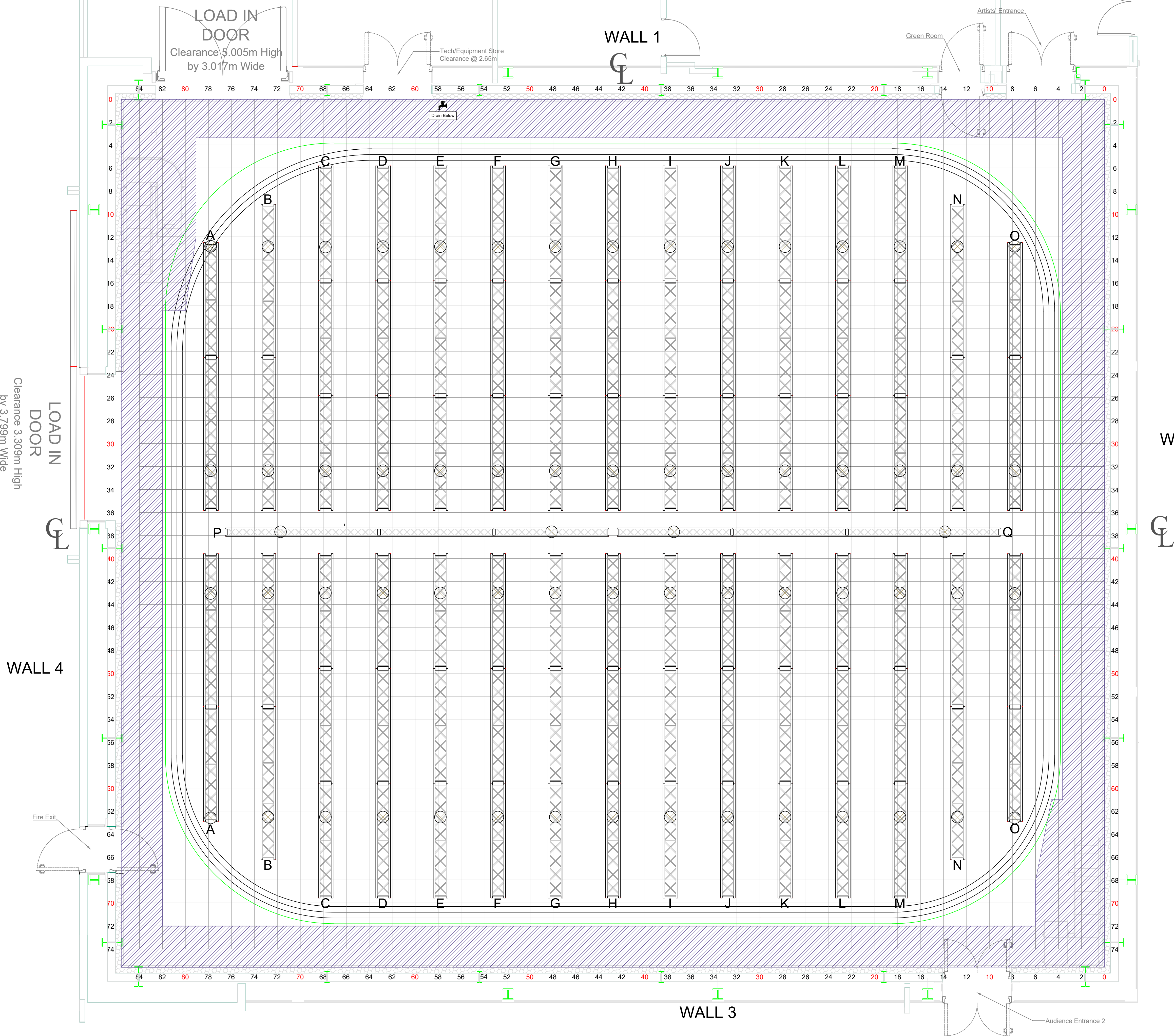


Galleries (Level1 - Scenery Runway (Ground Level))

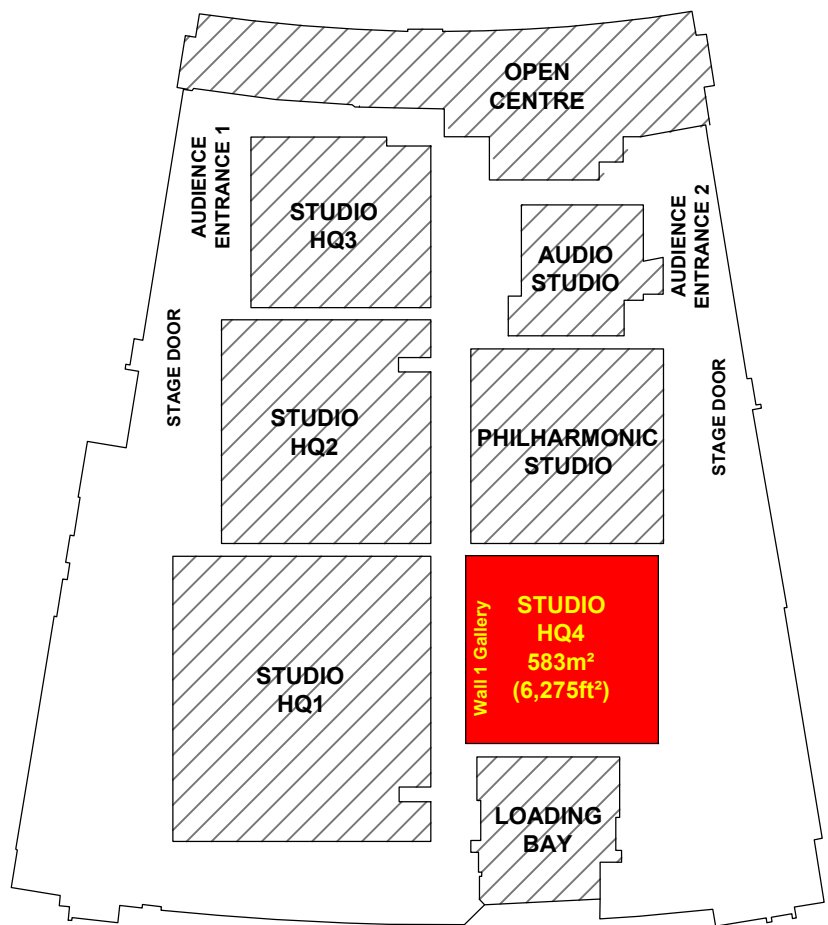


MEDIA CITY

HQ4 Studio Plan

Truss Layout

STUDIO HQ4 LOCATION PLAN



- STUDIO FLOOR GRID MADE UP OF 600mm SQUARES
- STUDIO WALL 2 TO WALL 4 25.6m (84ft)
- STUDIO WALL 1 TO WALL 3 22.8m (73.8ft)
- STUDIO SPACE 583sq m (6,275 sq ft)
- IMPOSED LOAD 12kN per sq m
- HEIGHT TO UNDERSIDE OF GRID 10.731m
- HEIGHT TO OUTER CYC TRACK IS 9m
- HEIGHT TO MIDDLE CYC TRACK IS 6m
- HEIGHT TO INNER CYC TRACK IS 9m
- MAXIMUM HEIGHT OF SCENERY HOOKS IS approx 10m
- MAXIMUM HEIGHT OF LIGHTING BARS IS 11.2m
- LOAD IN DOOR: WALL 1: 5.05m Wide, 3.017m High
- LOAD IN DOOR: WALL 4: 3.309m Wide, 3.799m High

- NUMBER OF LIGHTING TRUSSES:
 - PROLYTE TYPE 40v: 4x 7m, 4x 8m, 22x 9m
 - PROLYTE TYPE E20v: 2x 10m
 - LIFTGUARD MOTORS () x60 (1X 8 WAY CONTROLLER)
 - LIFTKET MOTORS () x4

- GROUND LEVEL MAINS: 2x 125A 3φ, 2x 63A 3φ
- 12x 32A 1φ, 24x 16A 1φ
- GANTRY LEVEL MAINS: 2x 63A 3φ, 8x 32A 3φ
- 474x 3Kw SINEWAVE DIMMERS

N.B. MEASUREMENTS ARE INCLUDED AS A GUIDE. PLEASE DOUBLE CHECK ON SITE IF CRITICAL TO PRODUCTION.
ADEQUATE ARRANGEMENTS FOR ACCESS AND EGRESS TO AND FROM THE STUDIO SHOULD BE ALLOWED IN LINE WITH REGULATIONS

- KEY:**
- Fire Lane**
 - Water Tap**
 - Fire Alarm Beacon**
 - Fire Alarm Sounder**
 - Facility Panel**
 - 3 Phase Mains Outlets**

PRODUCTION:	
DIRECTOR:	
DESIGNER:	
DRAWN BY:	
PRODUCTION DATE:	
Useful Telephone Numbers 24hr Control Room 0161 855 6400 dock10 office 0161 886 5111 MCR 0161 886 5151 Unauthorised copying or distribution is prohibited	SCALE: 1:50 @ ISO_A1_(841.00_X_594.00_MM) Version: Drafted 06/10/2026,